

Using the Letasa wiki

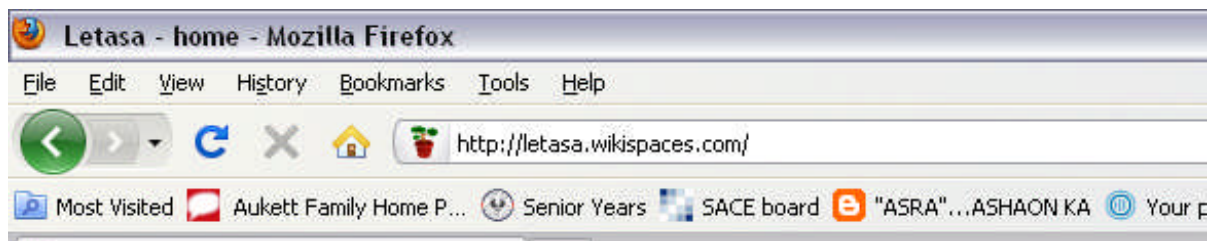


- A wiki is a space on the internet where **members** can share information.
- Wikipedia is the extreme example, built entirely from contributions by the public.
- Because we are educators, we are able to develop our wiki at **no cost**, and we can **control** who is a member, and only members have access to the site.
- It can be whatever the members want it to be. Examples of the sorts of functions are:
 - Uploading resources such as documents, spreadsheets and PowerPoints that other members can download
 - Providing live links to websites and other on-line resources.
 - Embedding images and videos (make them yourself or use YouTube and teacher tube clips)
 - Create new pages and write the content
 - Use the discussion forums which are restricted to members.

Some example content has been developed to illustrate the possibilities, but it is entirely up to the contributors.

How to access the wiki

When you are a member of the wiki, you simply type in the URL shown below (<http://letasa.wikispaces.com>) and log in.

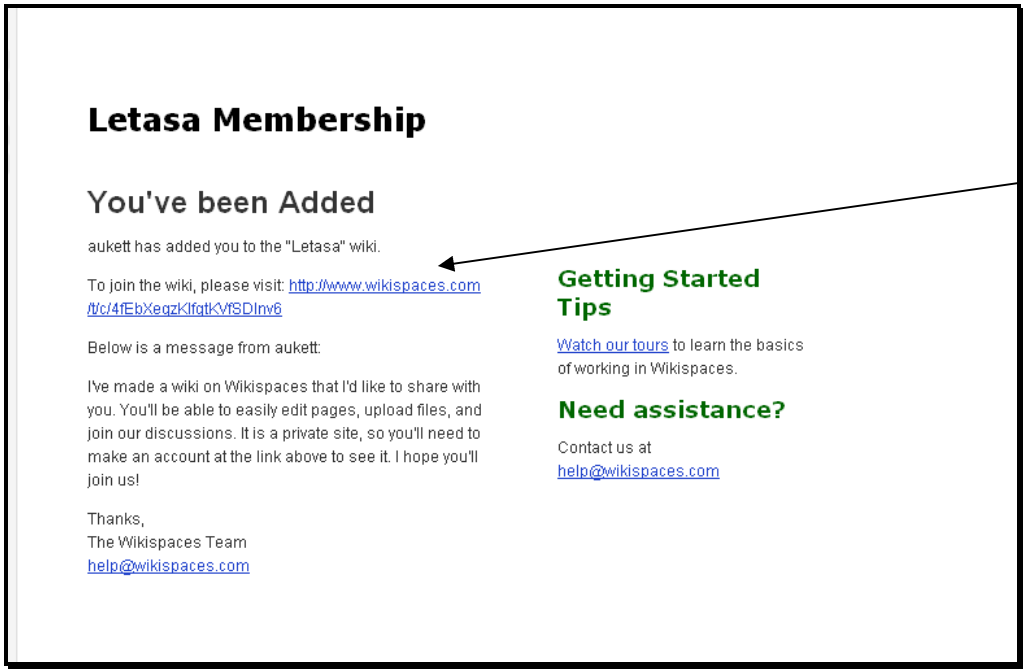


If you are not already a member then you have to join.

There are two ways to become a member. You can apply or be invited. All financial members of Letasa who supply an email address will be invited to join.

On the next page is a step by step explanation of how this works.

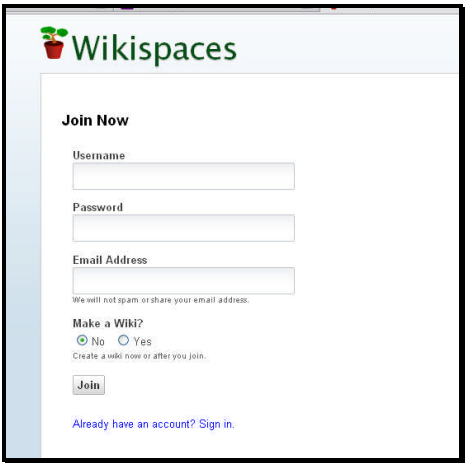
1. One of the course organizers (who this is, is decided by us) will have generated an email which you will receive, something like this.



2. clicking on the link provided will take you to the "sign in" screen:



3. Click on "create an account", which will bring up the "join now" screen;



4. fill in your details and click "join", and you will be an active member.

Or, if you can't wait to be invited, you can ask to join.

5. type in the address www.letasa.wikispaces.com
6. repeat steps 3 and 4 above.
7. you will see a screen which tells you an email has been sent
8. on the email you will be asked to confirm your email address
9. the organizer will receive an email and can either approve or deny the request
10. once confirmed you will see a screen like this one and you can start wiki-ing

The screenshot shows the Wikispaces user dashboard for the user 'auketttrv'. At the top, there is a navigation bar with links for 'My Wikis', 'My Account', 'Help', and 'Sign Out'. A yellow banner at the top of the dashboard area states 'Your email address has been confirmed.' Below this, there are tabs for 'My Account', 'Dashboard', 'Mail', and 'Settings'. The main content area features a welcome message 'Welcome, auketttrv' and a blue informational box about favorite wikis. A 'Favorite Wikis' section lists 'Letasa' as a member. Below this are sections for 'Inbox' (showing 'You have no new mail.'), 'Monitoring' (showing 'You are not monitoring anything.'), 'News' (with links to 'Hold a wiki training camp', 'We're hiring!', and 'Resources for Project-Based Learning'), and 'Community' (with a link to 'help@wikispaces.com').

Get into the wiki, explore its possibilities and practice adding stuff. The main thing to remember is to click on the EDIT tab if you want to change or add anything. And when you've done, click the Save tab to see what it looks like.

If there is a demand, Letasa can run "easy how-to" sessions for members.